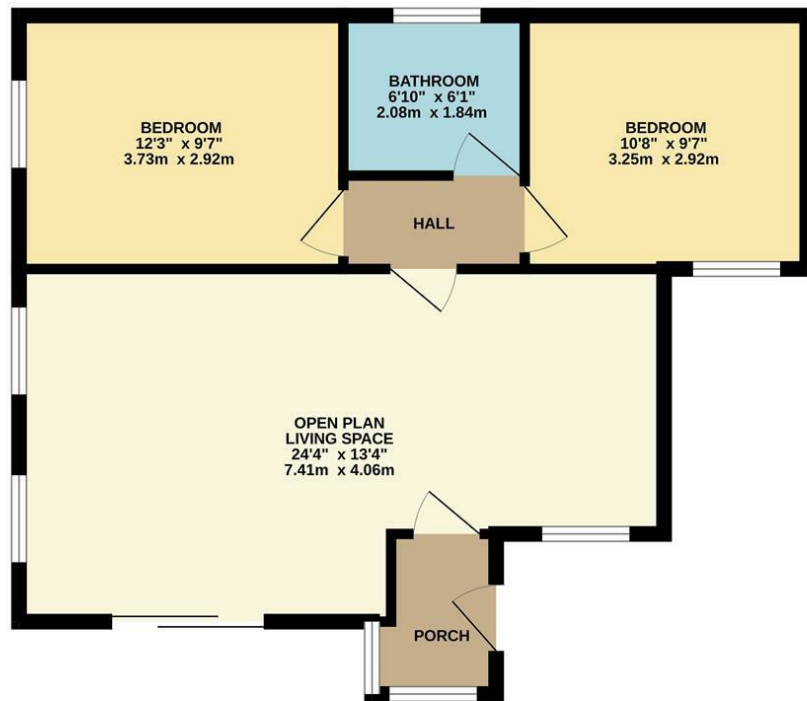


GROUND FLOOR  
600 sq.ft. (55.7 sq.m.) approx.



TOTAL FLOOR AREA: 600 sq.ft. (55.7 sq.m.) approx.  
Whilst every attempt has been made to ensure the accuracy of the floorplan contained here, measurements of doors, windows, rooms and any other items are approximate and no responsibility is taken for any error, omission or misstatement. This plan is for illustrative purposes only and should be used as such by any prospective purchaser. The services, systems and appliances shown have not been tested and no guarantee as to their operability or efficiency can be given.  
Made with Metropix ©2025

40 Lee Road, Leamington Spa  
£1,200 Per Month

charlesrose.



A well-presented and recently redecorated 2-bedroom bungalow situated on the sought-after Lee Road in Leamington Spa. This lovely home features a spacious open-plan kitchen and living area, a modern bathroom, and two well-sized bedrooms with brand new carpets.

The property also benefits from a sunny, private garden and excellent energy efficiency, thanks to solar panels and double-glazed windows earning it a strong EPC rating of B.

Sorry no pets & no sharers  
12 months minimum rental

charlesrose.

- 01926 832411
- hello@charlesrose.co.uk
- charlesrose.co.uk



